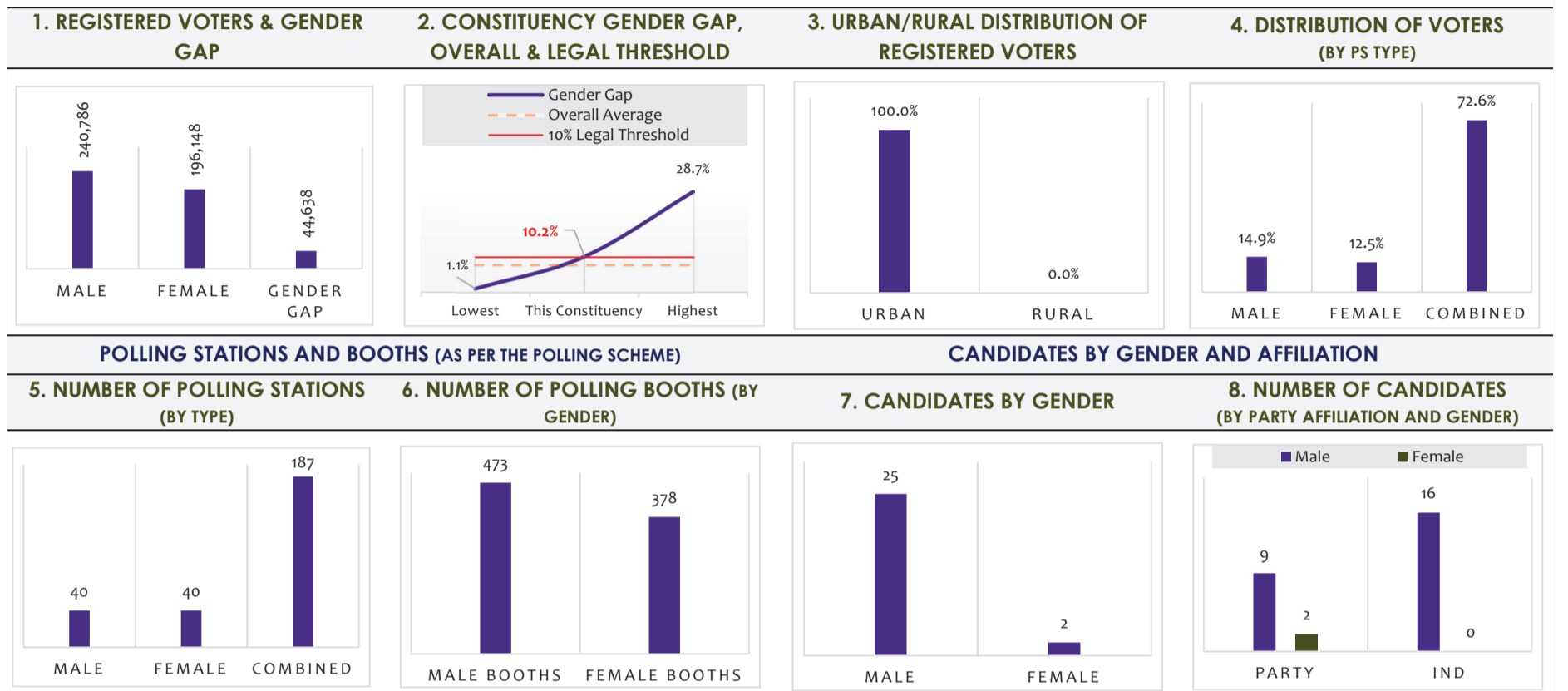


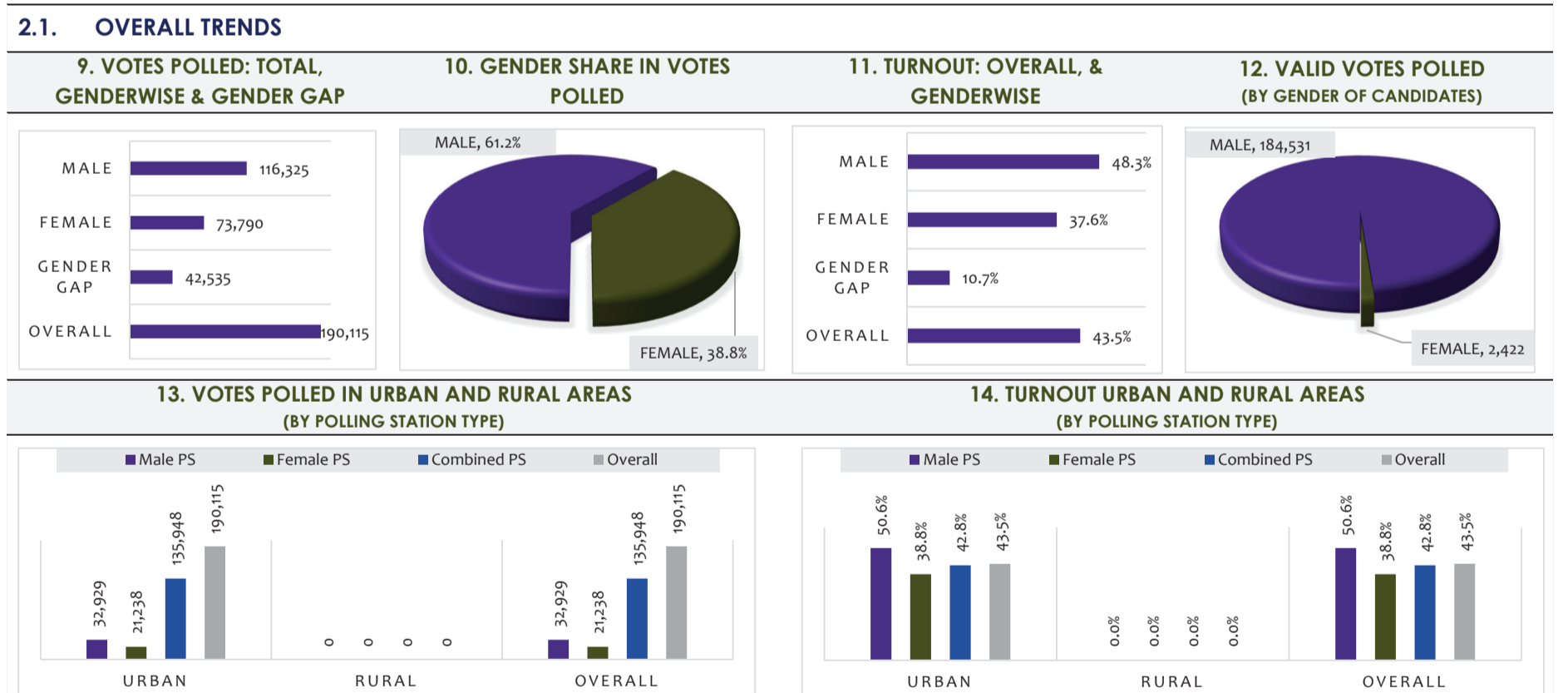
# NA-247 Karachi Central-I

Demographic Composition		
Predominantly Urban		
Population	Registered Voters	Rank by Voters
938,178	436,934	190
Polling Stations	Polling Booths	Candidates
267	851	27
Votes Polled	Turnout	Rank by Turnout
190,115	43.5%	191
Winner	Winner Party	Win Category
Khawaja Izhar Ul Hassan	MQMP	Two Way Race

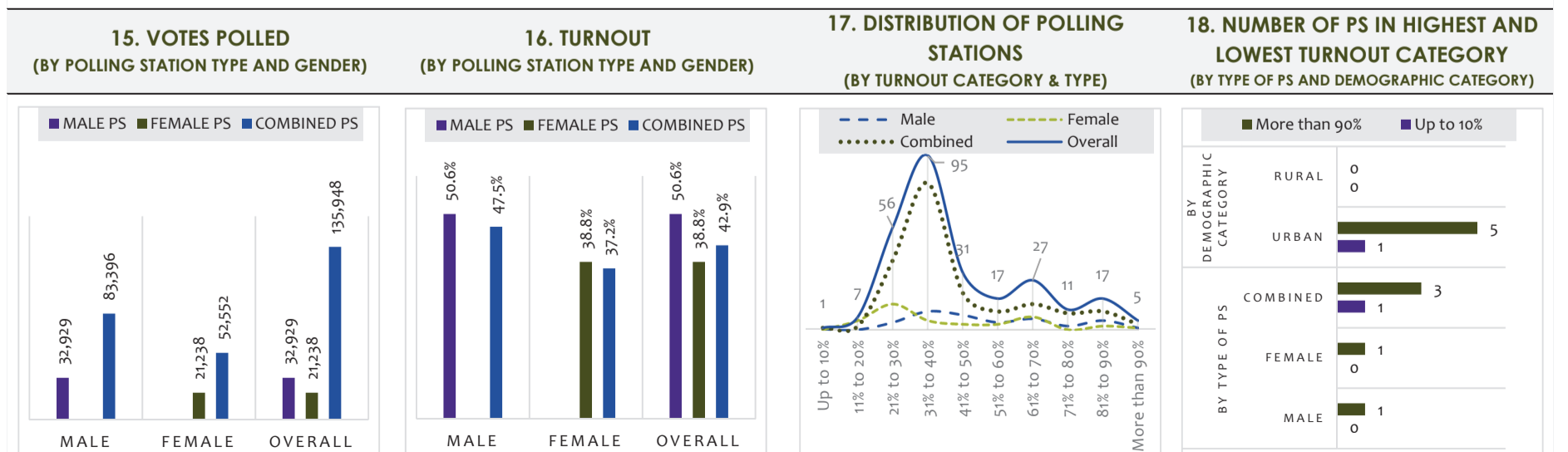
## 1. VOTERS, POLLING STATIONS AND CANDIDATES: GENDER AND DEMOGRAPHIC DYNAMIC



## 2. VOTES POLLED AND TURNOUT: GENDER AND DEMOGRAPHIC DYNAMIC

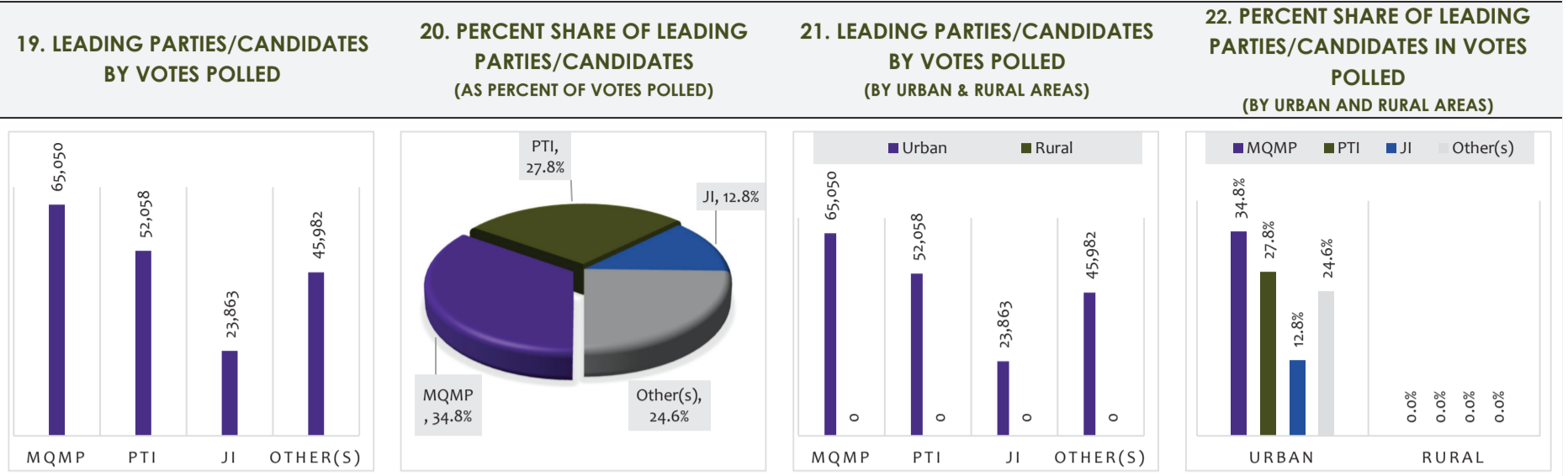


## 2.2. POLLING STATION-LEVEL TRENDS

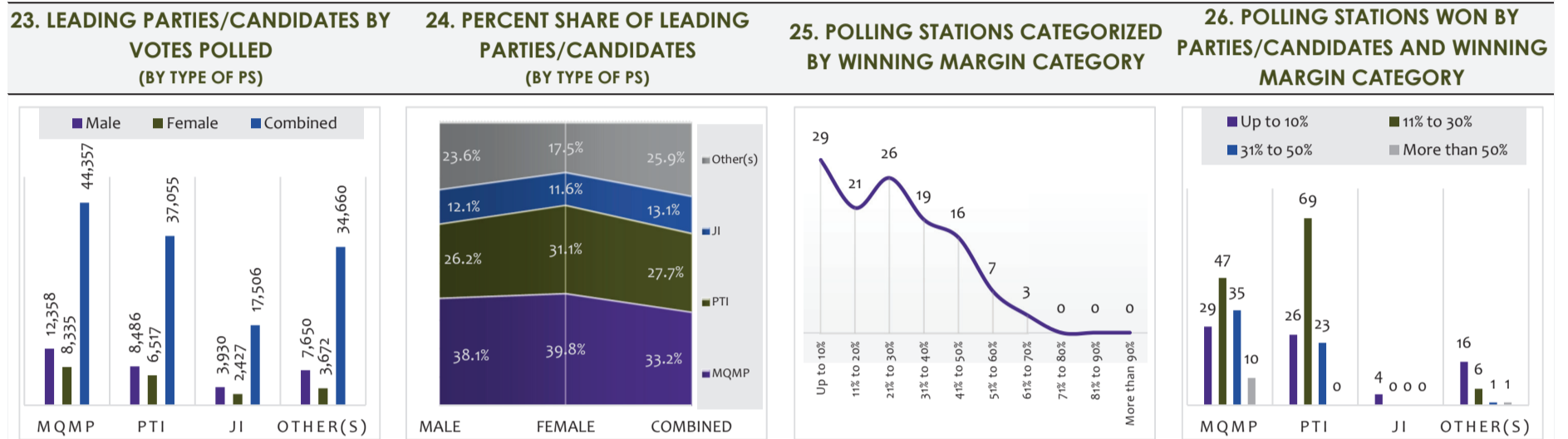


### 3. TRENDS IN PARTY VOTE AND SEATS

#### 3.1. OVERALL TRENDS

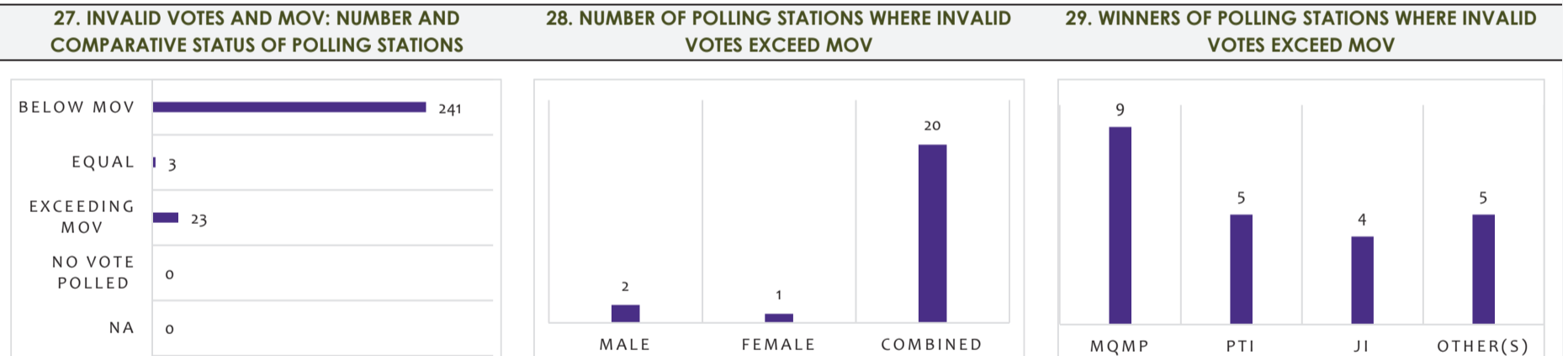


#### 3.2. POLLING STATION-LEVEL TRENDS

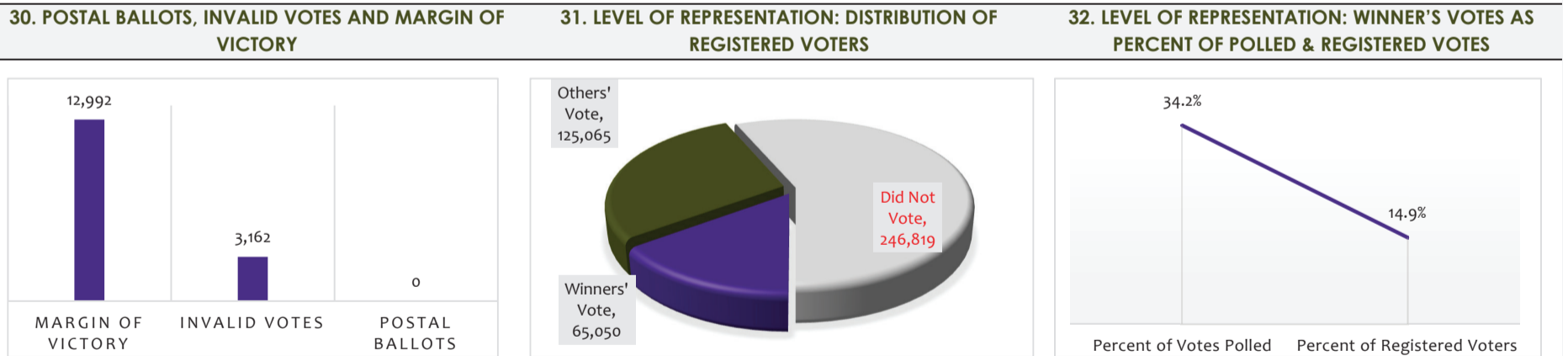


### 4. MARGIN OF VICTORY (MOV), INVALID & POSTAL BALLOTS, COMPARATIVE VOTES POLLED AND RESULTS

#### 4.1. INVALID VOTES: POLLING STATION LEVEL TRENDS



#### 4.2. LEVEL OF REPRESENTATION, POSTAL BALLOTS & INVALID VOTES: CONSTITUENCY LEVEL TRENDS



#### 4.3. FORM 45 TO FORM 49: COMPARATIVE VOTES POLLED AND CANDIDATE VOTES

