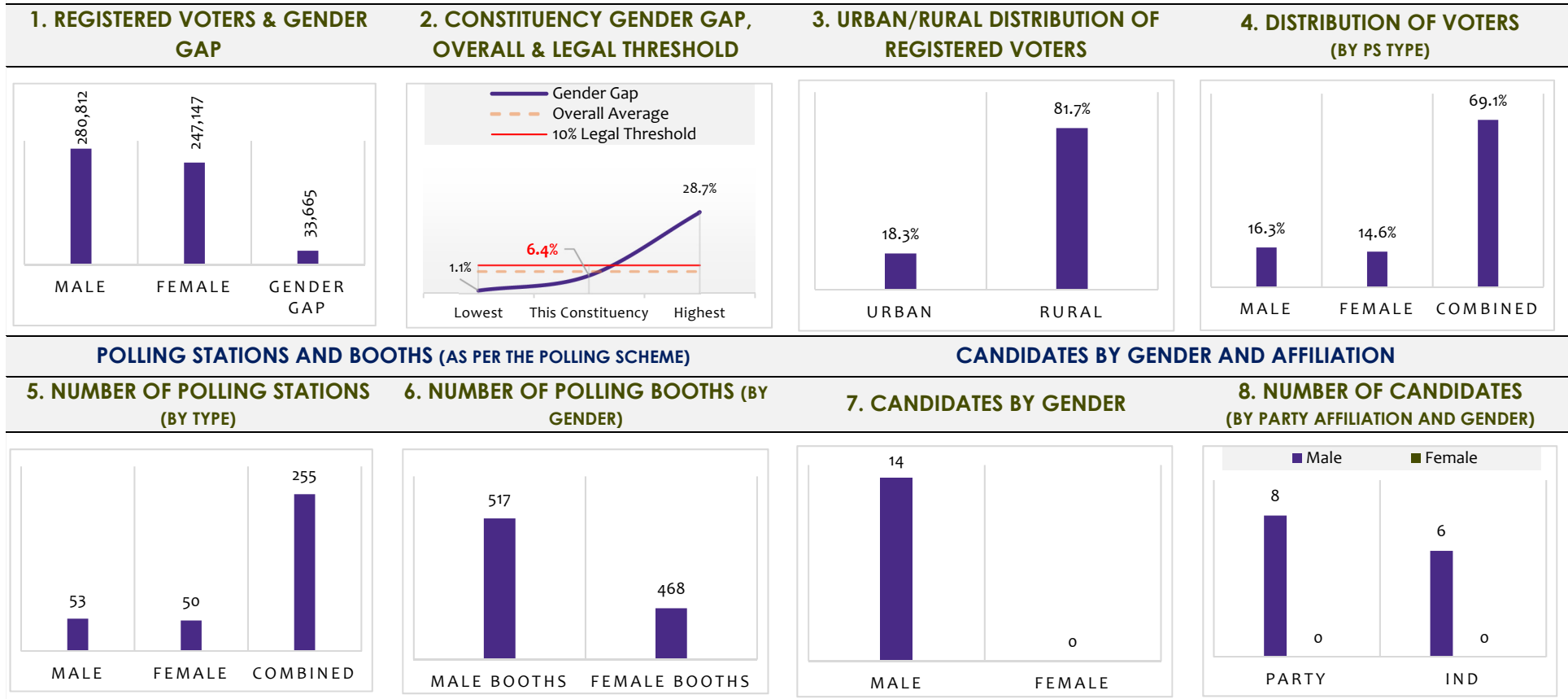


NA-63 Gujrat-II

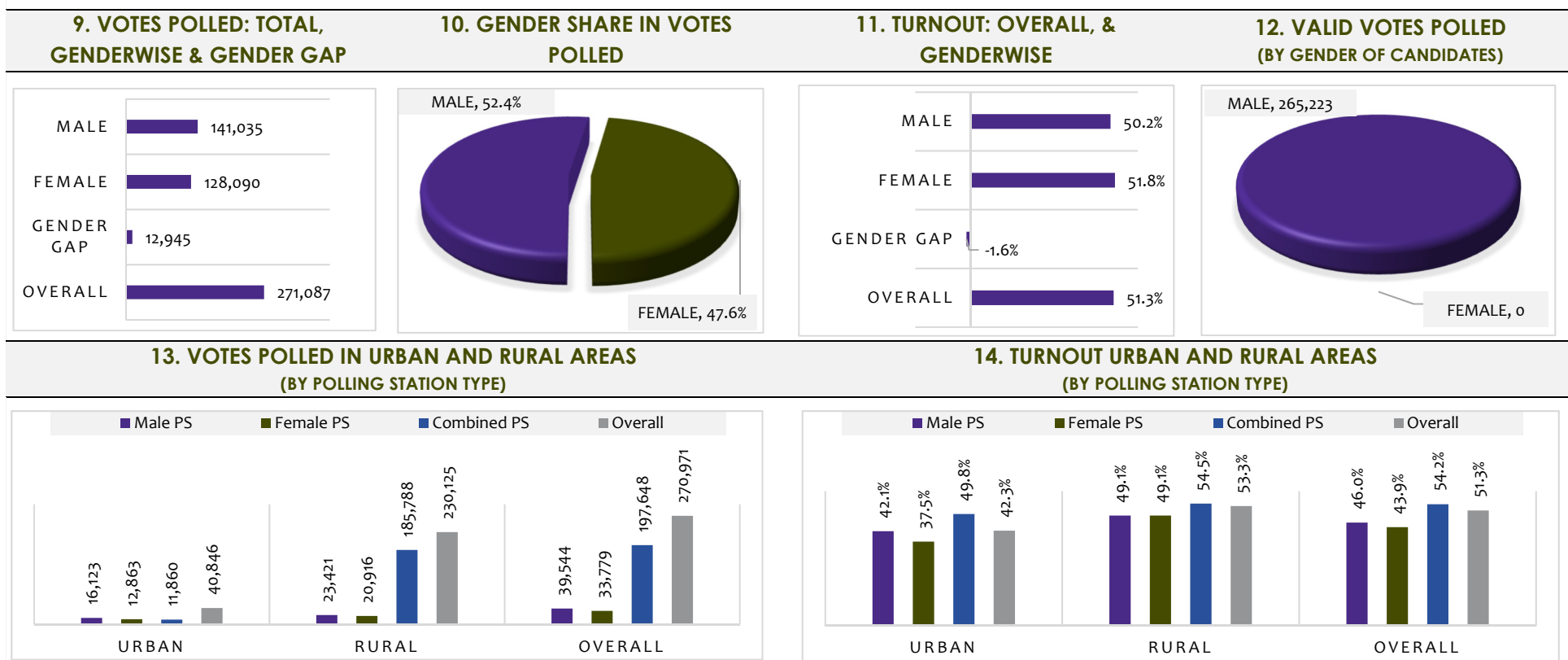
Demographic Composition		
Predominantly Rural		
Population	Registered Voters	Rank by Voters
782,935	527,959	93
Polling Stations	Polling Booths	Candidates
358	985	14
Votes Polled	Turnout	Rank by Turnout
271,087	51.3%	102
Winner	Winner Party	Win Category
Hussain Ellahi	PML	Two Way Race

1. VOTERS, POLLING STATIONS AND CANDIDATES: GENDER AND DEMOGRAPHIC DYNAMIC

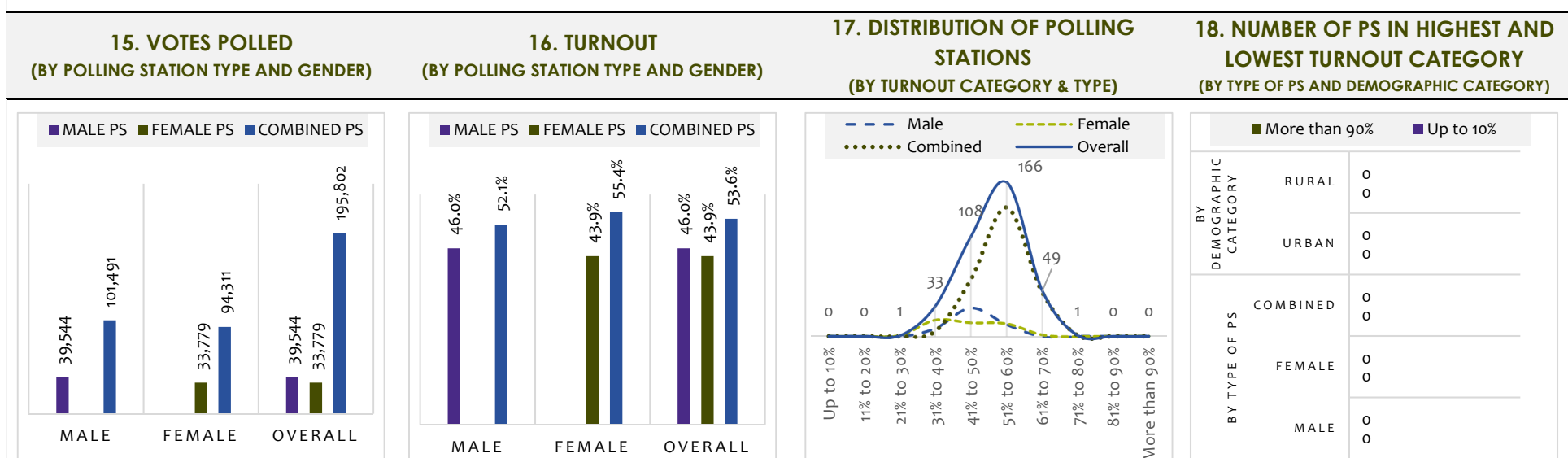


2. VOTES POLLED AND TURNOUT: GENDER AND DEMOGRAPHIC DYNAMIC

2.1. OVERALL TRENDS

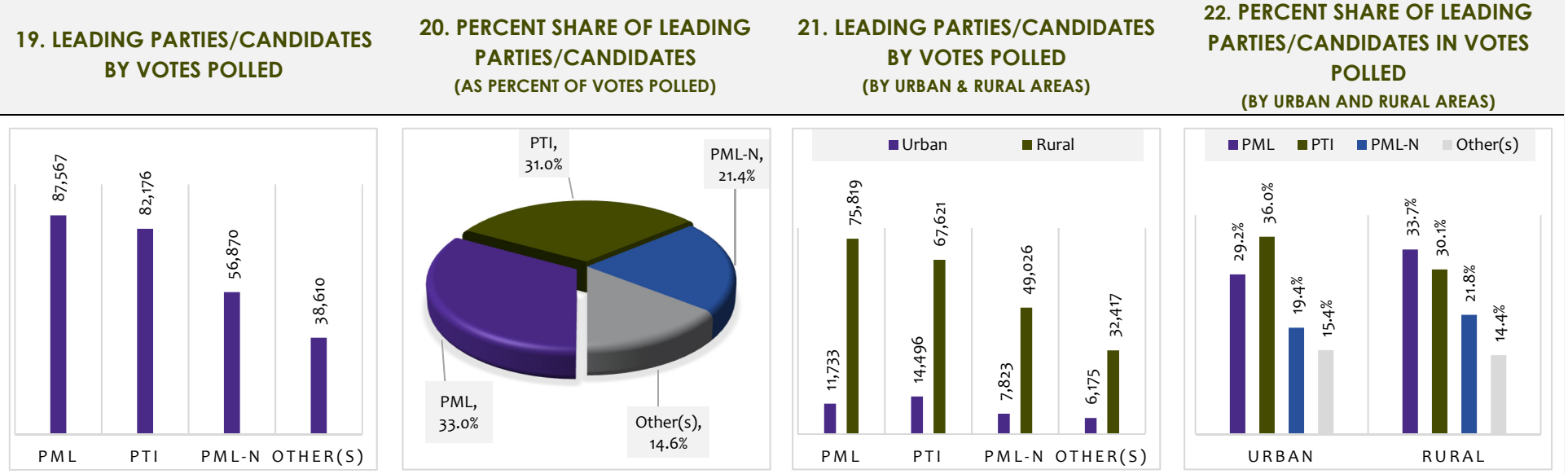


2.2. POLLING STATION-LEVEL TRENDS

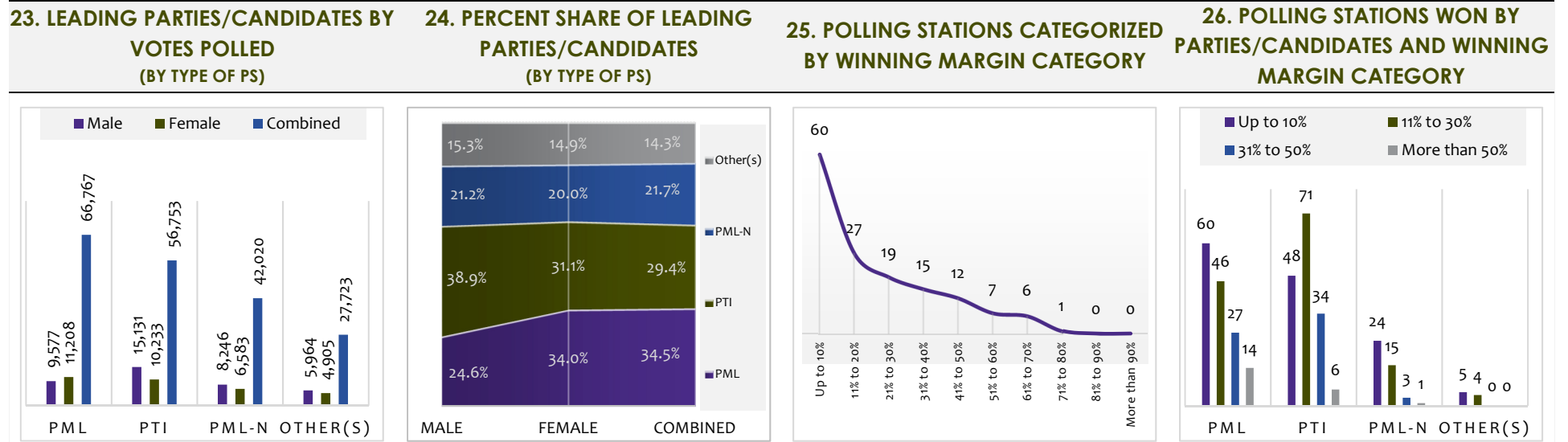


3. TRENDS IN PARTY VOTE AND SEATS

3.1. OVERALL TRENDS

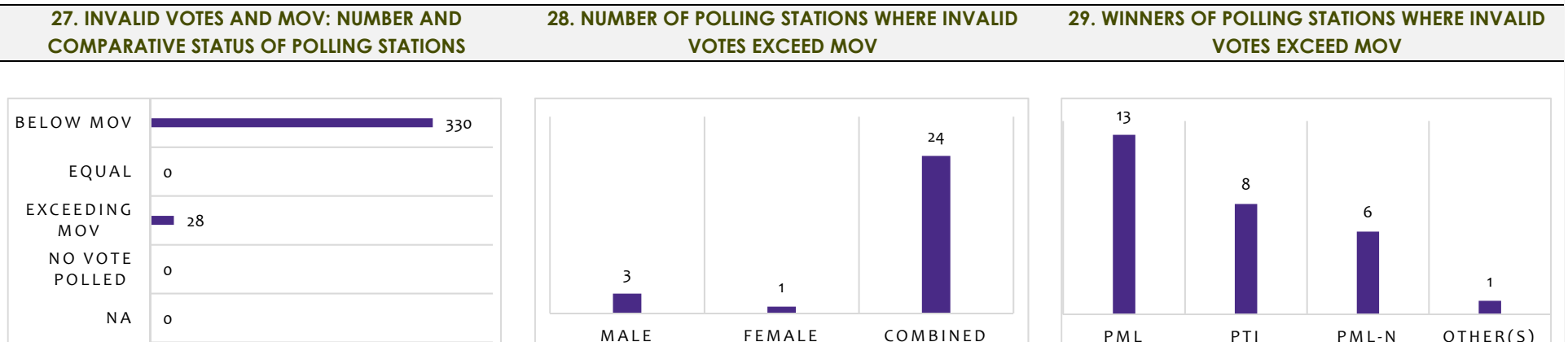


3.2. POLLING STATION-LEVEL TRENDS

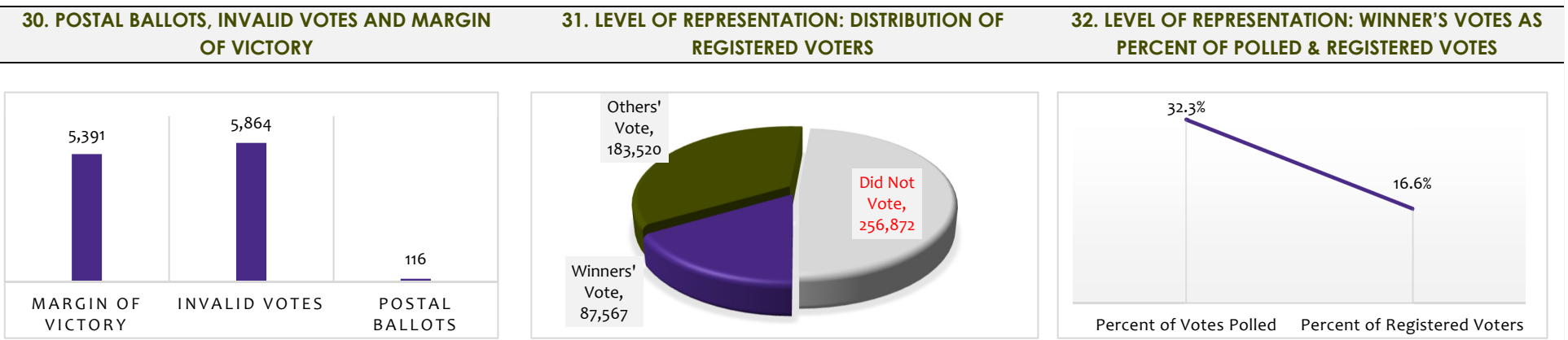


4. MARGIN OF VICTORY (MOV), INVALID & POSTAL BALLOTS, COMPARATIVE VOTES POLLED AND RESULTS

4.1. INVALID VOTES: POLLING STATION LEVEL TRENDS



4.2. LEVEL OF REPRESENTATION, POSTAL BALLOTS & INVALID VOTES: CONSTITUENCY LEVEL TRENDS



4.3. FORM 45 TO FORM 49: COMPARATIVE VOTES POLLED AND CANDIDATE VOTES

