

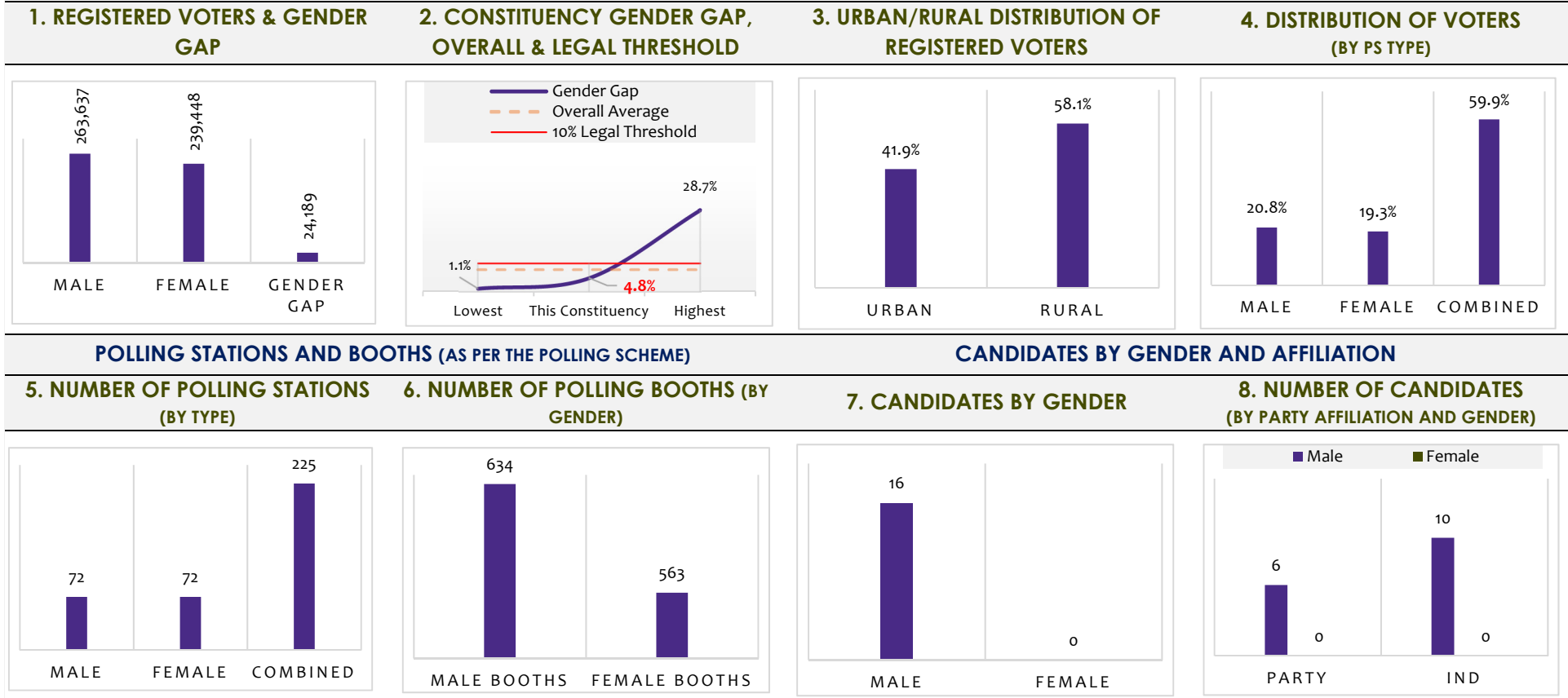
# NA-90 Mianwali-II

## Demographic Composition

Majority Rural

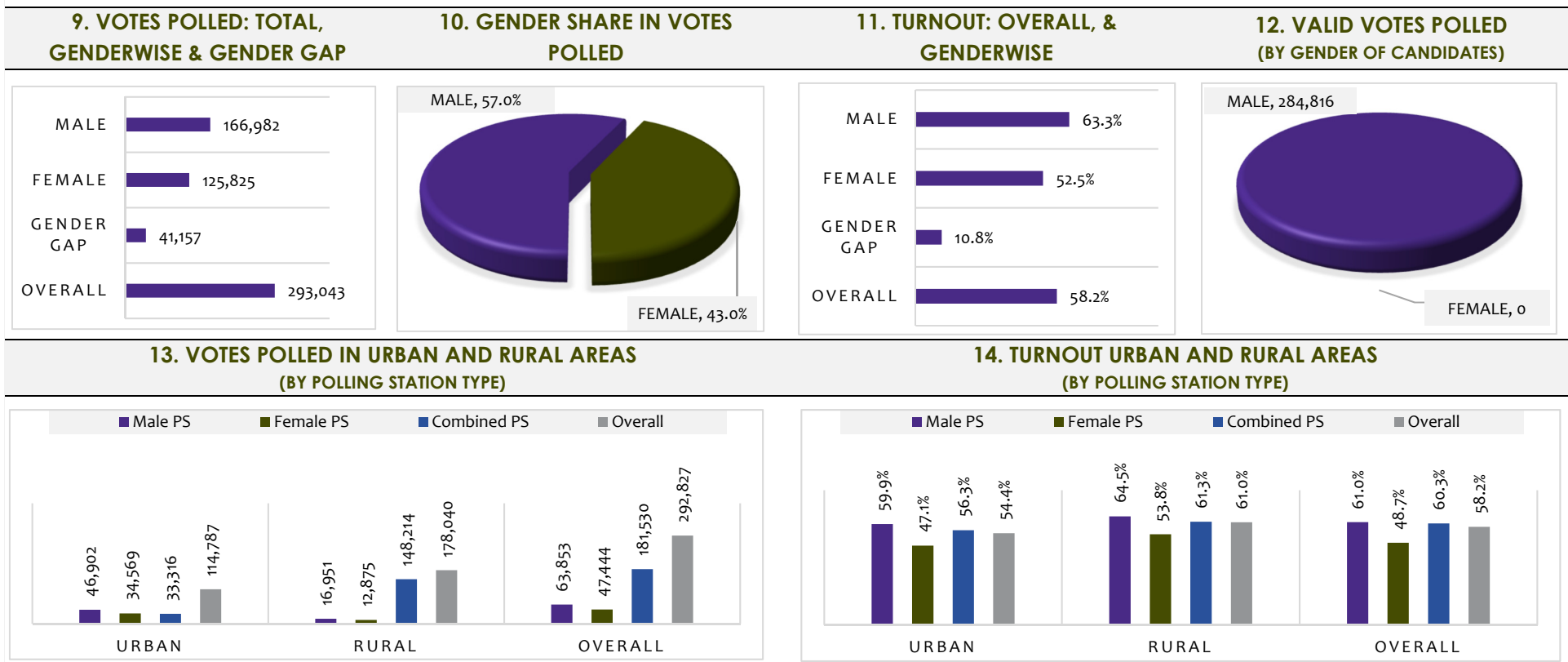
Population	Registered Voters	Rank by Voters
899,624	503,085	122
Polling Stations	Polling Booths	Candidates
369	1,197	16
Votes Polled	Turnout	Rank by Turnout
293,043	58.2%	20
Winner	Winner Party	Win Category
Umair Khan Niazi	PTI	One Way Race

### 1. VOTERS, POLLING STATIONS AND CANDIDATES: GENDER AND DEMOGRAPHIC DYNAMIC

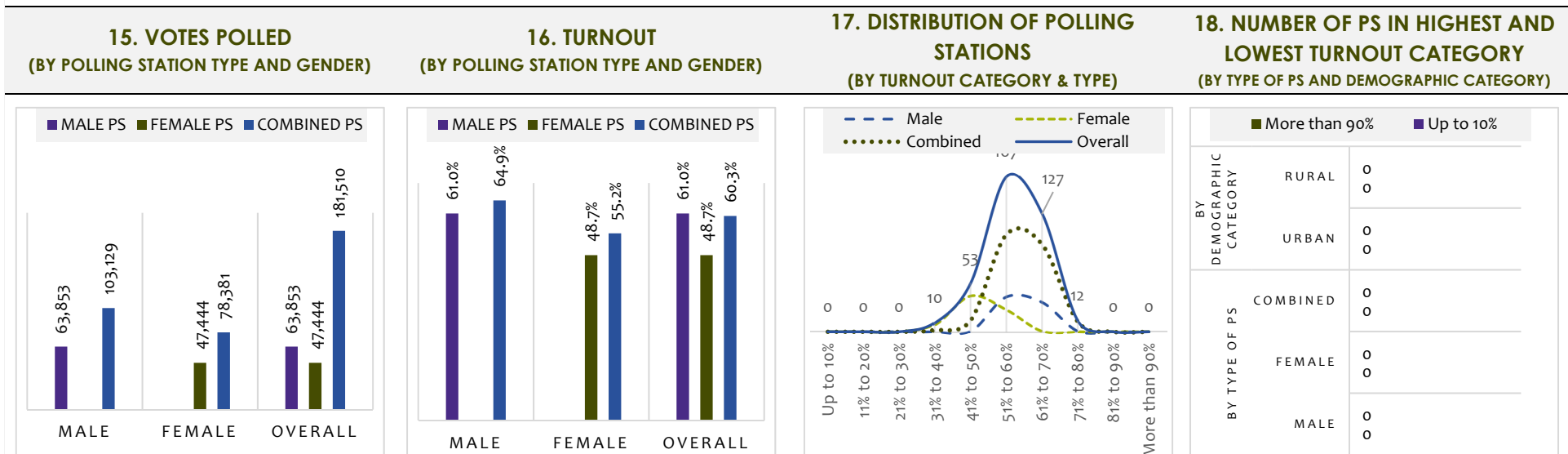


### 2. VOTES POLLED AND TURNOUT: GENDER AND DEMOGRAPHIC DYNAMIC

#### 2.1. OVERALL TRENDS

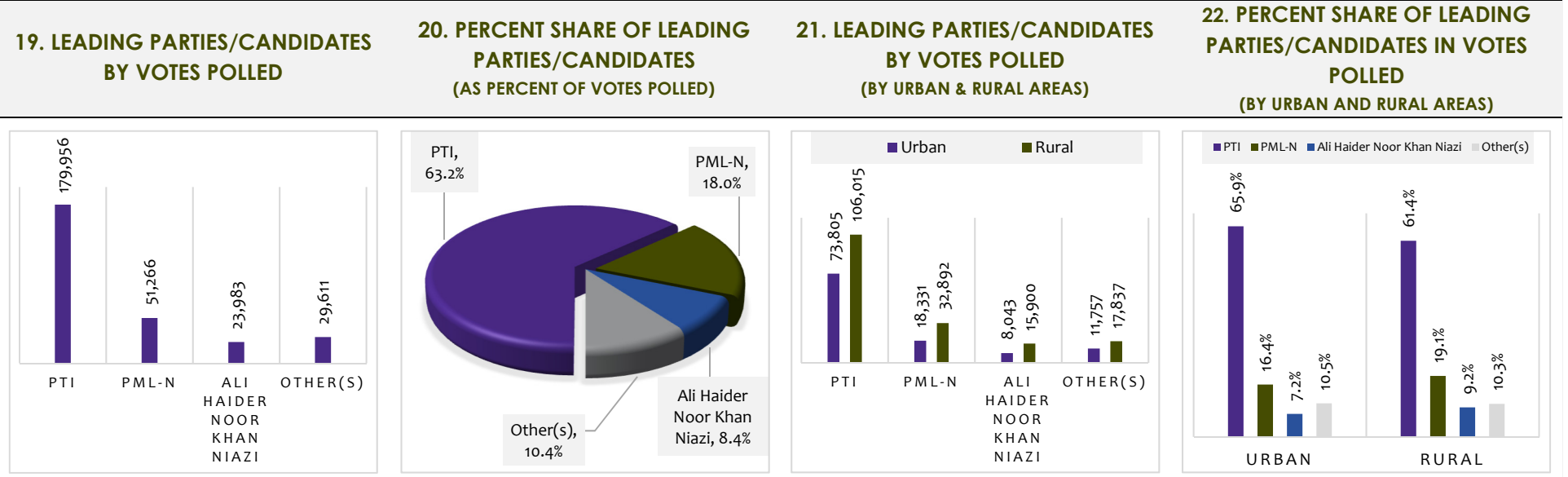


#### 2.2. POLLING STATION-LEVEL TRENDS

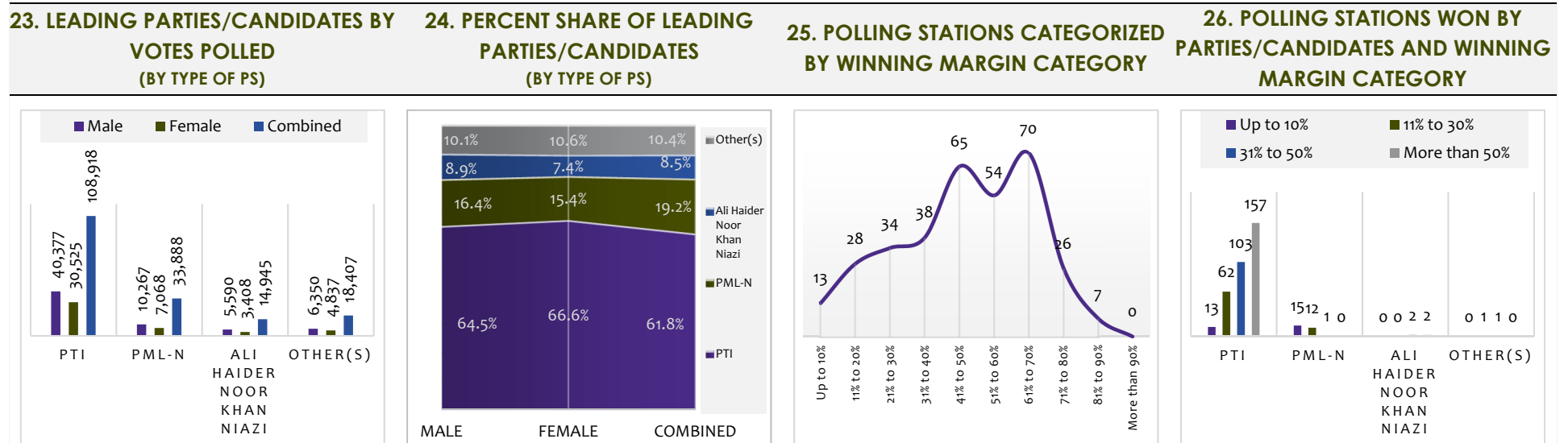


### 3. TRENDS IN PARTY VOTE AND SEATS

#### 3.1. OVERALL TRENDS

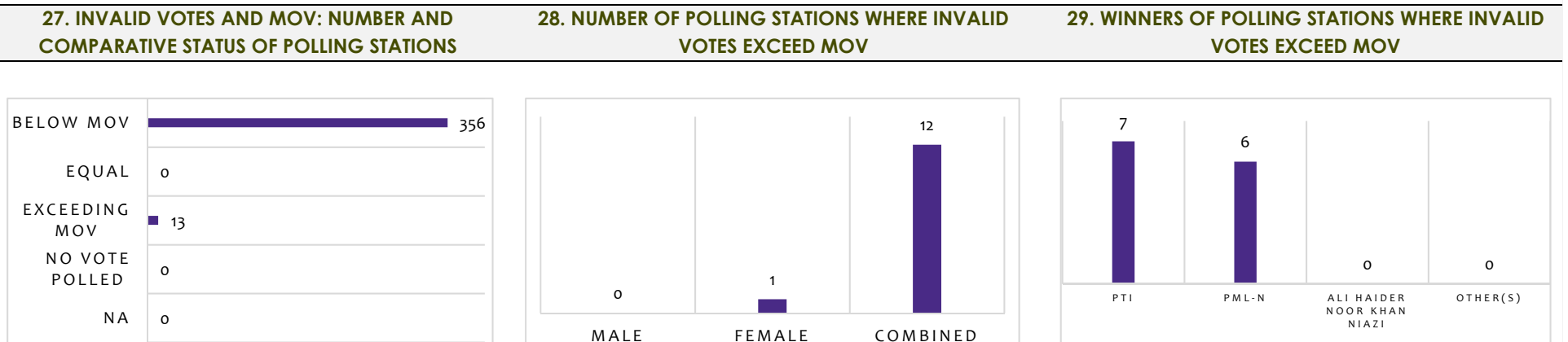


#### 3.2. POLLING STATION-LEVEL TRENDS

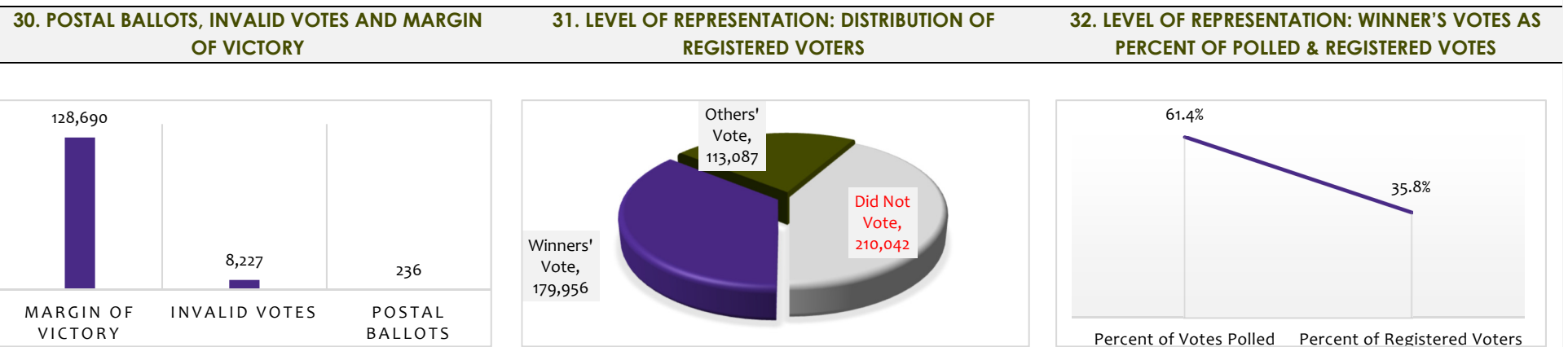


### 4. MARGIN OF VICTORY (MOV), INVALID & POSTAL BALLOTS, COMPARATIVE VOTES POLLED AND RESULTS

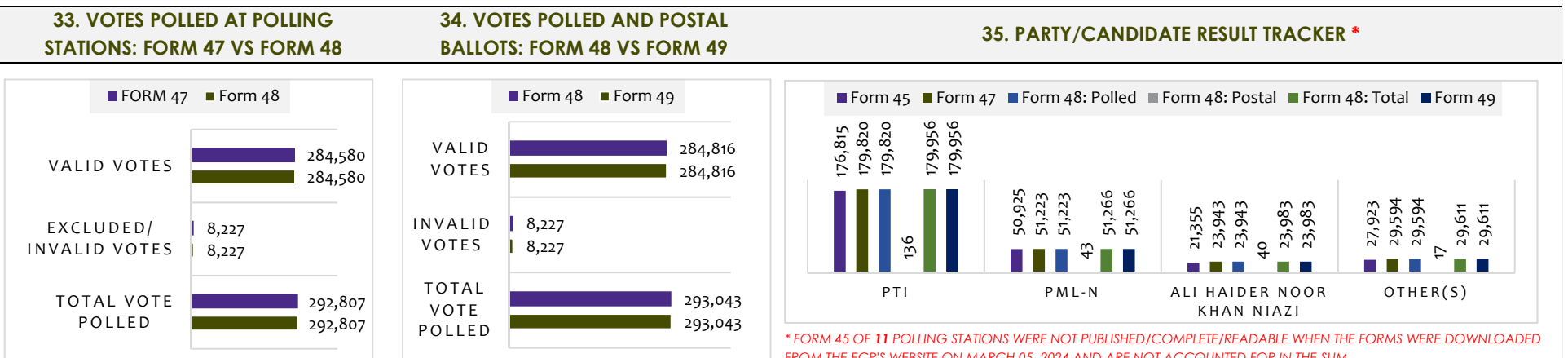
#### 4.1. INVALID VOTES: POLLING STATION LEVEL TRENDS



#### 4.2. LEVEL OF REPRESENTATION, POSTAL BALLOTS & INVALID VOTES: CONSTITUENCY LEVEL TRENDS



#### 4.3. FORM 45 TO FORM 49: COMPARATIVE VOTES POLLED AND CANDIDATE VOTES



\* FORM 45 OF 11 POLLING STATIONS WERE NOT PUBLISHED/COMPLETE/READABLE WHEN THE FORMS WERE DOWNLOADED FROM THE ECP'S WEBSITE ON MARCH 05, 2024 AND ARE NOT ACCOUNTED FOR IN THE SUM.